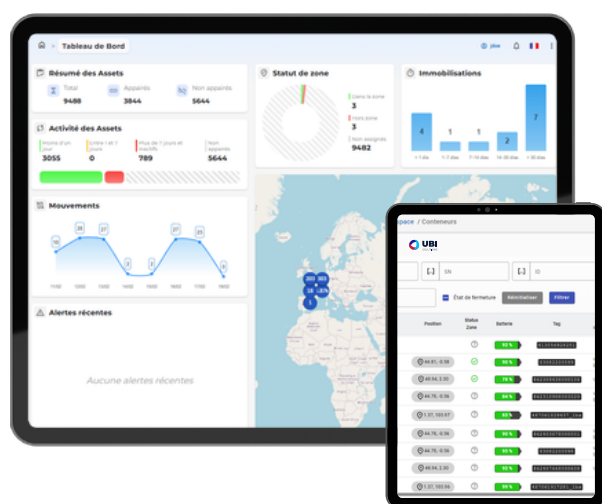


Connected Things

Intelligent platform for managing and tracking your assets

TAKE FULL CONTROL OF YOUR EQUIPMENT WHEREVER YOU ARE, AT ANY TIME



Connected Things is the IoT platform dedicated to tracking and tracing your assets. Designed to centralize and enhance the value of your tracker data, it ensures full visibility across your fleet, even in the most demanding **industrial environments**. Combining software performance with ease of use, it turns raw data into strategic decision-making tools, **both indoors and outdoors**. This is where your day-to-day operations truly come to life, thanks to continuous visibility and smart alerts that secure your operational flows.

HOW DOES IT WORK?

1

Tracker detection

Your asset trackers are automatically detected by the infrastructure

2

Data transmission

The platform communicates in real time with the server to ensure continuous tracking of each asset

3

Analysis & Reporting

The platform displays your data on an intuitive dashboard to locate your assets and manage your operations with precision

KEY FEATURES



Real-time location tracking

Know at all times where your equipment is, with no manual intervention.



Reports & statistics

Analyze performance, identify trends, and optimize your resources.



Custom alerts

Configure your thresholds and receive notifications tailored to your processes.



Movement history

Track the journey of each asset for complete traceability.



Data import / export

Easily import and export your data for optimal interoperability.



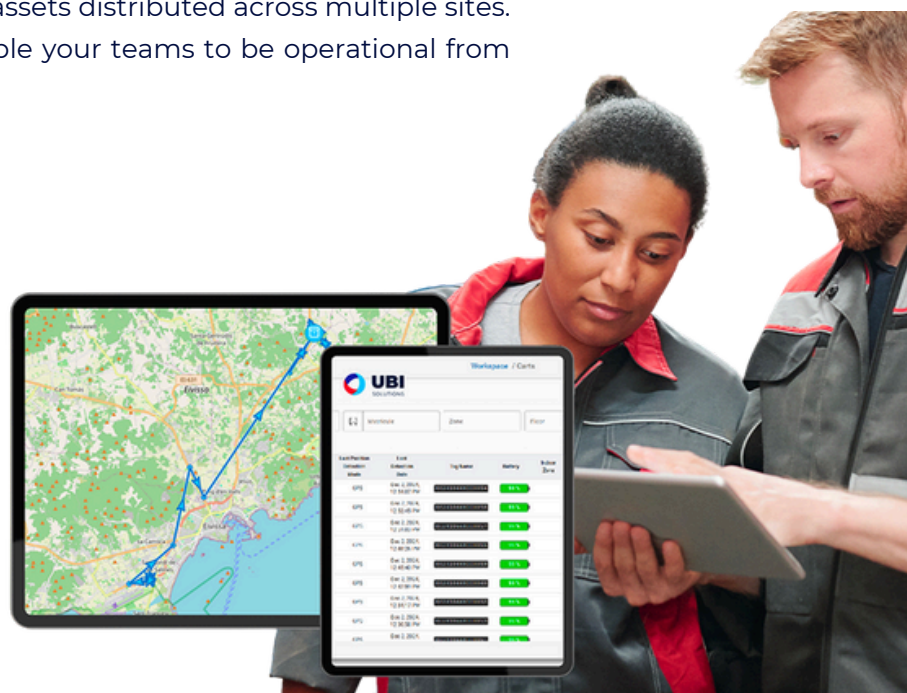
Simple and fast integration

Connect Connected Things to your existing tools and systems without technical complexity.

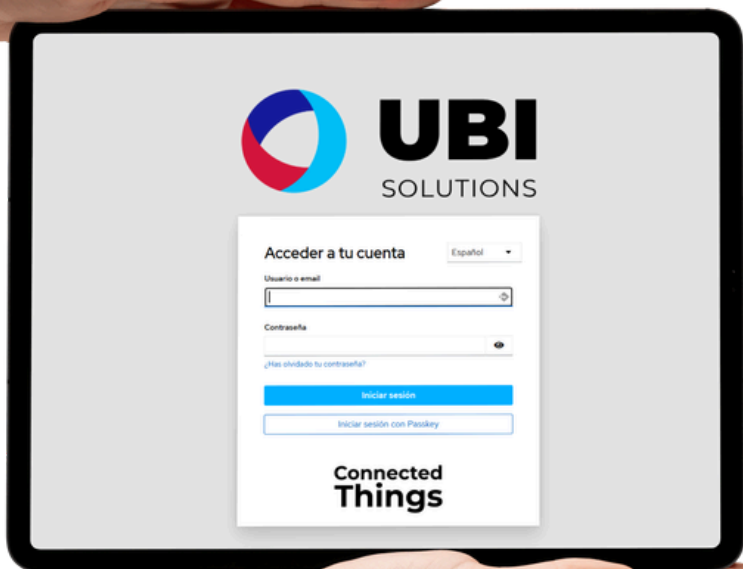
A SOLUTION DESIGNED FOR YOUR TEAMS

Connected Things adapts to your needs, whether you manage a logistics warehouse, an industrial equipment fleet, or assets distributed across multiple sites. Its quick setup and frictionless interface enable your teams to be operational from day one.

- Centralized, intuitive dashboard accessible at all times.
- Available in multiple languages for international use.
- Fast deployment, with no infrastructure or technical complexity required.



WOULD YOU LIKE A DEMO? CONTACT US



contact@ubisolutions.net

OUR OFFICES



Head office

1 Rue du 19 Mars 1962,
92230 Gennevilliers



Rhône-Alpes

55 rue Baraban
69003 Lyon



Sud Ouest

72 rue Jean Pagès
33140 Villenave d'Ornon



North

83 rue Saint-André
59800 Lille



Grand Ouest

7 rue de la Violette
22100 Quévert



Centre-Est

13 rue Marguerite Yourcenar
21000 Dijon